

INFO BOOK



Dear traveler,

Jasna Chalet Resort staff welcome you and wish you a great stay with us here at Lake Jasna,
in Kranjska gora and Slovenia.

To help you get around and find interesting things to do, we prepared this info book with
some useful information and tips that will make your stay in Kranjska Gora and Slovenia
more carefree and enjoyable.

Have fun!

IG: #jasnaresot #jezerojasna #lakejasna



CONTENT:

JASNA CHALET RESORT - INFO

Jasna Chalet Resort facilities

Need internet access, books, games?

Hungry, thirsty? It's all right here!

Culture at Jasna Chalet Resort – Theme events

Jasna Chalet Resort – A brief history

Nearby useful locations

Information about the humanitarian project

ADDITIONAL SERVICE

Trips

Renting (bike, sup)

Souvenir shop

HOW TO GET AROUND

By bus

By train

KRANJSKA GORA

PLACES TO VISIT AND THINGS TO DO IN THE REGION

SLOVENIA

Essential Slovenian phrases

Emergency numbers

JASNA CHALET RESORT - INFO



Check-in

Check-in starts **at 3 pm**.

Accepted payment methods: cash, Visa, Mastercard, Maestro, BA (we prefer credit cards).

GREEN & SAFE STAY: DISINFECTION OF APP WITH OZONE

Each apartment is disinfected with OZONE in accordance with NIJZ recommendations after the departure of guests and after cleaning before your arrival (extremely effective and completely sustainable method of disinfection)

Check-out

Check out **by 10 am**.

Apartment cleaning is included in the price.

In accordance with the NIJZ recommendations, please take out all trash from the bins before departure (separate - see instructions in the info folder), all packaging and other personal items from the apartment.

If you want our staff to clean garbage and other packaging in protective equipment, there is an additional charge of 80 €

Parking

For guests of the apartments, parking is provided in front of the building and is free of charge. we help you download the mobile phone application for the use of parking at the Reception. The exit gate opens automatically.

Apartment cleaning during the stay

We do not regularly clean the apartments during our stay.

Extended stay on the day of departure

In case of availability, you can request an extended daily stay until 6 pm the day before departure at the reception for an additional charge of 40/60 €.

House rules, the important stuff to remember.

- ➔ Guests are obliged to obey house rules
- ➔ JCR Apartments has the right to check house rules obedience at all times
- ➔ If guests cause any damage to the house or equipment, they will have to cover the damage and pay the loss of income due to caused damage.
- ➔ Payments have to be done in advance, also when guests prolong their stay.
- ➔ Reservation cancellation needs to be done at least 14 days before arrival, otherwise the full stay will be charged.
- ➔ Apartments can be used from 3 pm on the day of arrival until 11 am on the day of departure.
- ➔ Check-out is until 11 am.
- ➔ Please avoid making noise from 10 pm to 8 am.
- ➔ JCR Apartments are not responsible for injuries of their guests.
- ➔ JCR Apartments are not responsible for the money and personal belongings of the guests.
- ➔ Smoking in JCR Apartments is not allowed, regulated by Slovenian law UL RS nr.60/07.
- ➔ Leaning out of the windows and smoking on the windows in JCR Apartments is not allowed.
- ➔ Any possession or use of drugs, arms and flammable or explosive material within JCR Apartments is not allowed.
- ➔ Guests should stay decent and respectful to other guests.
- ➔ Entrance is not allowed to persons who are not guests of JCR Apartments.
- ➔ It is not allowed to take apartments inventory (pillows, towels, etc.) out of the apartment
- ➔ It is not allowed to use towels to clean the floor, tables, shoes,...
- ➔ Please let us know if there are any defects or faults in the apartments
- ➔ Leave the apartment in the same condition as it was (cleaned and undamaged)
- ➔ Please turn off the electric appliances (TV, A/C,...) and lights when leaving the apartment.

ALPINE BREAKFAST for apartment guests

- Breakfast is between 7.30 and 10.00.
- You can choose between three different menus (types) of alpine breakfasts.
- **BREAKFAST:** outside under a tent according to CoVid recommendations.
- When registering at the Reception, you choose **the type of breakfast and the time of arrival for breakfast**. We define breakfast in advance in accordance with our commitment to the Travel Life eco-certificate to reduce food waste. The type of breakfast can be changed daily by announcing at the reception no later than 5 pm; after this time we take into account the pre-ordered breakfast. An hour of breakfast in order to comply with the CoVid recommendations of the NIJZ. Thank you for your understanding.

→ 20% daily discount on the rest of the offer of the Alpine Beach Café & the Kitchen of the Lakes and the Jasna Ice Cream House

All guests of Jasna Chalet resort apartments have a 20% discount on the entire daily offer in Jasna (Alpine Beach Cafe, Cocktail bar, Kitchen by the lake and Ice cream house). Also on BREAKFASTS WITH A VIEW.

NEW: And a 10% discount on DINNER UNDER THE STARS by the lake in Jasna, with the best Slovenian meat from the Poljane valley (every day from 6 pm to 9 pm). Reservations at the Reception.

TRAVELIFE eco certificate in Jasna

Travelife is the internationally recognised sustainability certification scheme that has been developed by the travel industry FOR the travel industry. Travelife is an affordable and fair system that helps hotels and accommodations to show that they are serious about sustainability.

What is sustainable tourism?

»Tourism that takes full account of its current and future economic, social and environmental impacts, addressing the needs of visitors, the industry, the environment and host communities.«

(United Nations World Tourism Organisation - UNWTO)

Sustainable tourism

The balance between environmental, social & economic issues means that everyone can benefit from tourism. To achieve it, tourism businesses should work in a sustainable way, covering the balance between 3 basic aspects:

Environment: day-to-day tourism operations should be managed to minimise negative environmental impacts

Social: tourism businesses should build good relationships with their local communities, invest in their staff, promote staff retention and improve morale, respect & preserve local culture and educate guests on the country, its customs and heritage

Economic: guests should be encouraged to visit nearby attractions, buy local products and services and help them become sustainable enterprises that will grow and create jobs for local people

Physical environment protection: ensuring no damage is caused to any natural asset including land, water and air, helping to conserve natural heritage and biodiversity

Social wellbeing: ensuring wellbeing of local people and preserving the destination's authenticity and cultural heritage, values and traditions

Long-term economic balance: providing local people with stable jobs and opportunities, as well as keeping the money tourists spend within local economy

JASNA LAKE

MOUNTAIN REFLECTIONS

IN CRYSTAL CLEAR WATERS!

Just before the first turns of the most beautiful panoramic road in the Julian Alps, you will discover Jasna Lake, consisting of two interconnected lakes at the confluence of the streams of Velika and Mala Pišnica.

Visitors to Jasna Lake will enjoy the lake for swimming and bathing or simply jumping into the water from the several jetties. Views of the lake are offered from a 6-meter-high viewing platform and from the numerous paths. Refreshment is offered in form of a cold drink or ice cream, with the view of the beautiful Julian Alps in the background. Enjoy pleasant evenings with music performances in the beautiful natural setting of Razor and Prisank.

The Jasna Chalet Resort offers pampering all 365 days of the year. Spend some quality time with your family, invite several families or your friends, organize a romantic getaway for your loved one. No matter when; in both beautiful and bad weather. In the summer or winter. In the autumn or spring.

At Jasna Chalet Resort we believe that the calendar should not determine the right time for pampering. You should choose your right moment to unfold and enjoy your free time.

Here, in a unique natural scenery, only 200 steps from the beginning of the Triglav National Park, 12 minutes drive from Austria and 7 minutes from Italy and at the beginning of the famous mountain road across Vršič into the Soča Valley, where adrenaline adventures await you, we are here for you.

Welcome.

WHAT TO DO ?

DIGITAL DETOXIFICATION

We recommend this program as a basis for all others. Turning off your digital gadgets is the best way to remove stress and restore connectivity to yourself, your loved ones, and the environment without any disturbance. It also gives you the opportunity to completely relax and enjoy the magic of the present moment.

UNDERSTANDING NATURE (DISCOVERING THE IMPORTANCE OF THE LINK BETWEEN PEOPLE AND NATURE IN A PLAYFUL WAY):

- recognize plants, animals, forests, mountains, rivers, lakes (harvesting of forest fruits, medicinal plants, observing birds and animals, fishing ...);
- learn how to survive in nature;
- family adventures in nature, group games;
- camp nights (campfire, cooking with embers, talking, singing & guitar at campfire);
- hikes in the dark.

* All programs are conducted under the guidance of scouts and mountain guides.



SPORTS PROGRAMS

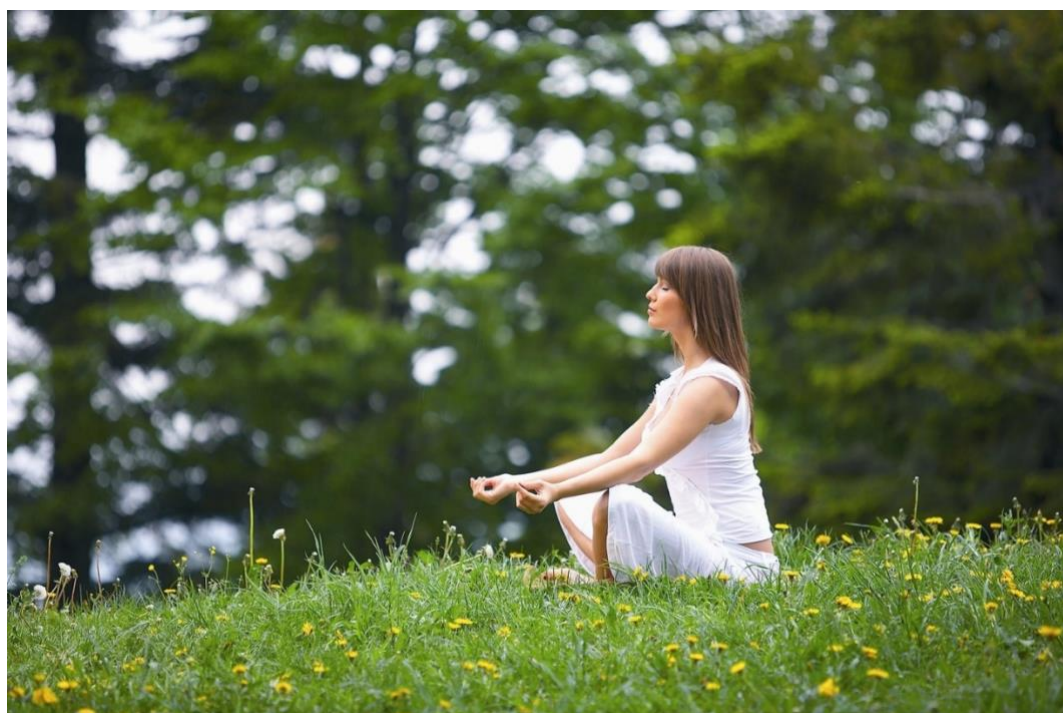
- hiking, mountaineering, climbing
- cycling
- skiing and sledding
- body shaping and fitness training

* programs are run under the guidance of personal trainers and mountain guides.

BODY PURIFICATION AND ENERGY CLEANSING

- healthy food
- fasting with natural juices
- Alpine yoga (also baby yoga)
- green baths (according to “Shinrin Yoku”)
- breathing techniques
- tree hugging, barefoot walking
- energy point exercises
- transcendentalna meditacija

* All programs are conducted under the guidance of nutritionists, yoga instructors, meditation guides and personality growth teachers.





Jasna 1933; during the preparation of the Re: vitalization of Jasna project, we bought original postcards from Jasna at auctions; the oldest is from 1904; from them we made the story “**The first golden years of Jasna 1904-1935**” and presented it in the form of an **internal gallery** around the apartments.

The story of Jasna and Jasna Chalet Resort

Kranjska Gora was once a peaceful alpine village in the 19th century with harsh and hard life. In 1902, the first hotel was built in Kranjska Gora; hotel Razor. With the presence of the new hotel, tourists started coming to the village. There was no double lake at the time but the place was inviting guests with its view of the mountains led by Razor. In the World War I the road that leads to Vršič pass was built, with enormous number of casualties.

In 1928, King Alexander, King of Yugoslavia, who owned the famous castle of Villa Bled in Bled, ordered a hunting lodge to be built for him in the mountains. And the locals built him what he desired in Čičare, Kranjska Gora, later known as “Porentov dom”, which was burned to the ground 5 years ago.

He liked Kranjska gora so much that he then ordered the construction of a summer resort for him and his aristocratic friends. In 1929, a swimming pool larger than the Olympic one was built for him, the bottom of the pool could be raised or lowered with a winch. There were also 20 changing rooms at the edge of the pool and a scenic restaurant next door. A year later, a royal chalet was added to it, where he had a so-called hunting room and his personal apartment above.

Until 1945, there was a swimming pool at Jasna with a closed-type restaurant. Fenced with a fence and barbed wire. After 1945, the spa and restaurant were opened to the public. Many generations of Gorenjska region people have learned to swim here.

But in 1966, there was an earthquake in the arid and the bottom of the pool cracked and was irreparably damaged. Sometime during this time, there were also large torrential floods, which flooded the village of Kranjska Gora. In order to avoid such events in the future, they carried out a 10-year reconstruction of torrential waters on both sides of Vršič; on Jasna they filled up the old pool, moved the river Pišnica towards the edge of the valley and divided it into two parts in the case of high waters.

The material for all the construction feats was taken from the scree of the Pišnica River, to a depth of 3 meters, because they knew that the hollow would be filled with water from natural underground springs. And so, the first lake on Jasna was created. It has a dual function it is a protection against high waters and a romantic, gift to the mountains that we have admired for centuries.

In 1981, during the construction of the Karavanke tunnel, the members of the Kranjska Gora Tourist Association managed to take the construction material from the upper part of the scree of the Pišnica river and so the second lake was created, the lakes were connected in 1983.

In 1984, KOMPAS tourist company bought Jasna from the Tourist Association and replaced the old wooden building with new ones. For the most part, the a la carte restaurant was known for good food and entertainment. In a smaller one, the first fast food restaurant - breaded chicken legs of Perutnina Ptuj.

The facility passed into various hands after privatization in the 1990s until it burned down in 2005. During the reconstruction, the then owners built 11 apartments with the intention of selling them together with the plots in front of the building to the lake, which would mean that Jasna would be closed to the public in this part. The municipality tried to resolve the free passage with a lawsuit. The Supreme Court gave the 2014 owner the right to imprison Jasna in their work. However, the situation on the real estate market changed during this time and in 2014 they returned the Jasna building with the property to the Deželna banka Slovenije, which started looking for a buyer. Thus, from 2005 to 2019, Jasna was imprisoned and abandoned.

In 2015, we started the first tours of the Jasna location and after three years of preparations and content coordination in 2017, just before Christmas, we decided to buy Jasna as a long-term family investment with the aim of implementing the Re: vitalization of Jasna project at this exceptional location. high added value.

JCR ("resort" Jasna Chalet Resort) - Re: vitalization of the Jasna project with the aim of building the alpine resort Jasna Chalet Resort began in 2015 with a vision to create a model example of a sustainably oriented integrated tourism product in such an exceptional location in line with Slovenia's tourism development strategy. in the field of sustainable tourism orientation and the starting points of the Green Slovenian Tourism Scheme. High added value as proof that such products can have a positive impact on the environment, the preservation of natural and cultural heritage, the local population and are an additional magnet for visitors and also bring high added promotional and economic value. We set goals with the aim of combining and preserving the natural and cultural heritage of micro and macro locations into a single tourist product.

After 4 years of preparations, works and 122 consents and permits, on January 27, 2019, after 14 years, we breathed life into the beauty Jasna again. Project last phases - greening of Jasna with autochthonous growth after a study done for Jasna by dr. Bavcon, director of the Botanical Garden in Ljubljana, will be completed in about 20 years. In 2040.

The newly opened facility and its surroundings have been revitalized to sustainable standards. All healthy existing wood was sandblasted and protected with natural oils (this is done twice a year). The building was additionally insulated with MRGT funds for energy rehabilitation with the help of EU funds; in most of the roofs with the best natural material Slovenian sheep wool (SOVEN company). This allowed us to design part of the attics in t.i. BREATHERS; these are rooms or galleries where the ceiling is made of 3 cm of Slovenian wood, 18 cm of Slovenian sheep wool and only the roof without vapor-permeable foils; this allows us to let the rooms breathe together with the guests purified but extremely good air of the Clear and Valley.

HEATING

We are heated with alpine water from wells at 50 meters (PALIR company) through the WATER-WATER heating system (Thermia). The house is smart and heats itself at a constant temperature of 23C with a 20-minute delay sensor.

The entire ground floor (almost 500m²) is heated by underfloor heating, and the upper rooms and attic are additionally point-calculated according to calculations for rational energy consumption.

You this initially high investment has allowed us to keep our CO2 footprint to a minimum. Also heating costs. Accordingly, it is always pleasantly warm here. As it should be in an alpine family home.

NATURAL VENTILATION AND COOLING

The apartments have air conditioning installations, but we do not need them at the moment, as every summer we are refreshed by the pleasant coolness from Vršič. For really hot days, we installed skylights with mosquito nets in all galleries; in the evening, if it is hot, turn off the lights due to flying visitors from nature, open the balcony door (warning - when the hook is up, the door opens; if it is not possible, do not close it by force, but turn to the reception), open the gallery window be naturally ventilated; a closed mosquito net allows you to have the window in the gallery open all evening and at night even under the lights. This naturally cools the air in the apartments.

TOPIC ABOUT NEIGHBORING BATS

The house is lit with warm 3000K lights, which automatically turn off around 11pm and put Clear in the dark. This is in order to provide you with a peaceful rest and to the delight of the protected bats that live in the caves in Mala Pišnica and after 11 pm, if you lie on the pier, they will fly over you.

More about the JASNA AUTOCHTHONOUS PLANTING PROJECT according to Dr. Bavcon's instructions, about rescuing the famous pine on the pier, building a new natural HABITAT on the lake for fish, ducks and frogs, energy points, activities in Jasna and daily offer at the Jasna Chalet Resort Reception.

AWARDS AND RECOGNITIONS

For all sustainable efforts, in 2019 we were awarded by the CHAMBER OF TOURISM AND CATERING OF SLOVENIA with the highest recognition for outstanding contribution to the development of sustainable tourism. In 2020, we were finalists in the award for the most innovative tourist products of the year SOWER 2020 at the Slovenian Tourist Board (STO).

Nearby useful locations

ATM – cash machine

ATM is located at the bottom parking

Convenient store

Its located in the city center next to post office.

Pharmacy

A pharmacy (lekarna) is situated in the city center in front of hospital.

Police station

Is located across the road of hotel Kompas.

Post office

Is located in the city center.

Covid-19 testing center

Is located in front of the police station in Kranjska Gora. (PCR test for foreigners is 20€)

ADDITIONAL SERVICE

Jasna Chalet Resort reception serves as a tourist information point where you can get useful information about sightseeing, book tours and trips and buy a wide selection of souvenirs.

Renting (E – Bike, Cockta SUP experience)

E-bike

At the reception you can rent a quality E - bike. 4 hours will cost you 15 €/person. You can get free maps for orientation in Kranjska Gora.

Cockta SUP experience

At the reception you can rent a SUP for 30 min (7,50€). You also get a free bottle of Cockta beside the SUP.

INFORMATION ABOUT THE HUMANITARIAN PROJECT (SPONSORSHIP IN SLOVENIA)

The humanitarian project 'Sponsorship in Slovenia' started in 2010 under The Association of Friends of Youth Ljubljana Moste-Polje. It is focused on helping children and youth from socially disadvantaged families from all over Slovenia.

The goal of the project is to connect children in need with people who are willing to help, with the intention of increasing possibilities for healthy development and creating equal opportunities for all children.

The project provides financial help to children in need for adequate nutrition, school or extracurricular activities, transport to school, medical equipment and medicine, healthy development and other such expenses. With monthly support of at least €30.00 from their "godfathers" and "godmothers", these children are more able to integrate in life with their peers and have better chances and encouragement to achieve their life goals.

In the beginning of 2019 more than 7400 "godmothers" and "godfathers" had helped more than 9200 children in need from all over Slovenia.

The Sponsorship in Slovenia project also proposes systemic changes in Slovenian laws to create better possibilities for children in need and to enforce the Convention of the Rights of the Child. This is done through the provision of Free Legal Aid under the Sponsorship in Slovenia project, where families in need may also ask for legal help in areas such as housing, social services and welfare.

At Jasna Chalet Resort, we follow the vision of sponsorship in Slovenia and we also actively participate in the project with a regular monthly scholarship, thus helping children and youth.

Places to visit in the Gorenjska region

The Avsenik Museum

The Avsenik Museum, which is part of the Gostilna Avsenik restaurant in the centre of Begunje na Gorenjskem, presents the development and history of the Avsenik Brothers Ensemble. The legend of Slovenian national folk music, Slavko Avsenik, and his older brother, Vilko Ovsenik, were the founders of this music genre which today is imitated by many ensembles in Slovenia and throughout the world.

Museum Kranjska Gora

Liznjek's homestead is an ethnographic object in Kranjska Gora. It is located in the center of the village along the old main road. It was a rich landowner's house built in the second half of the 17th century.

Alpine Ski Museum Elan

Elan boasts a rich history of making skis. Its story can now be discovered at the Elan Alpine Skiing Museum, which opened its doors at its factory in Begunje na Gorenjskem, Slovenia. Elan was founded in 1945 on the initiative of the recognised ski jumper and manufacturer of skis, Mr. Rudi Finžgar. Elan has had many significant competition achievements in its history.

The museum of apiculture in Radovljica

Since opening in 1959, this museum has specialised in maintaining the heritage of Slovenian beekeeping by keeping records, collecting, storing, documenting, representing and popularising this tradition. Its quarters are in the Baroque Mansion House in the old part of the town.

The museum's exhibits represent the three key themes that mark Slovenian beekeeping: an indigenous race of bees, world renowned beekeepers and painted beehive panels.

Gorenjka chocolate factory

You have probably spotted the red packaged chocolates, sometimes in unusually large sizes, with a little girl in the picture, and the name of Gorenjka. Gorenjka (a girl from Upper Carniola) is one of the oldest and most successful Slovenian brands, and, we could also argue, one of the sweetest.

Chocolate festival in Radovljica

Takes place every year in April. You will be enticed by the vast choice of pralines, chocolates, desserts and other chocolate delights. In addition to tasting chocolate, which takes place through the purchase of tasting coupons, visitors have the chance to meet some of Slovenia's chocolate experts, have fun and be entertained by the packed accompanying entertainment programme.

Upper Sava Valley museum

The Ironworking and Palaeontological Collection with models and objects presents the history of ironworking and mining in the Gorenjska region, and plant and animal fossils from the Western Karavanken Mountains.

Lectar workshop and museum

This traditional Slovenian craft is still alive in Radovljica's old town centre. In the cellar of Lectar Inn in Linhart Square you will be charmed by the enticing smells of genuine Lectar hearts. The inn is also home to the Lectar Workshop and Museum where you can watch the hearts being made, see the traditional equipment and baking implements, and watch how the hearts are decorated. There is also a collection of decades-old honeybread hearts and other similar items.

KRANJSKA GORA

Kranjska Gora is an attractive mountain and tourist sports centre throughout the year. In the winter it sees Alpine skiers compete and top ski jumpers break new records at the near-by Planica. Cyclists endeavour to conquer the highest Slovenian mountain pass, and hikers can stop by many points of interest. To the north, the edge of the Karavanke mountains, to the south the Julian Alps. To the east Jesenice, and to the west the watershed of Sava and Zilja rivers. Fresh summers, cold winters. Vast forests of coniferous trees and larches, and mountain pines above the tree line. Chamoise, deer and rabbits among the wild animals can be found here, and grouse and birds of prey among mountain birds.

The Upper Sava Valley, one of the most beautiful Alpine valleys, lies in the north-westernmost part of Slovenia, right next to the tri-border with Austria and Italy.

In the north it is bordered by the circumference of the Karavanks, and the Julian Alps in the south. In the east the border runs under Jesenice, where the Upper Sava Valley opens into the Radovljica basin, and on the west along the watershed between the Sava and Zilja river basins, west of Rateče.

10 settlements grew on the more distinct and fertile hills on the Karavanks side with a relatively more favourable climate due to its sunny position. Due to the mountain climate and limited farming area the Valley itself was settled late; the oldest settlements didn't grow until the 11th century.

The Upper Sava Valley is full of ethnographic jewels, as well as modern adrenaline sports. Quiet and secluded on one hand, home to vibrant social events on the other. The Upper Sava Valley has always been and will always be a treasure for which you have to take time and see it from all sides, in all seasons and with all its adventures.

Kranjska Gora Ski resort

The greatest assets of Kranjska gora are for sure the ski slopes extending from the hill of Vitranc to the village of Podkoren and Planica. The skiers can use fourteen ski lifts and five chairlifts, three of them are 4seated. Most of the trails, about 70ha, are covered also by artificial snow and are convenient for skiers of different skiing abilities.

How to get there:

By car: Take the motorway from Ljubljana and follow the signs to Kranj – Jesenice – Kranjska gora.

By bus or train: From Ljubljana take a bus or train to Jesenice. On arrival to Jesenice you can take a local bus to Kranjska gora which takes another 30 minutes.

Planica

Nordic Center Planica is an exceptional environment for continuing the tradition of ski jumping and flying, for training and competitions of cross-country skiers ... Planica is synonymous with courage, innovation and development. With more than 40 world records, it has become a spectacular attraction that also attracts many foreign visitors. Take a walk through the 80-year history of world achievements! The Planica Museum is located in the central building of the Nordic Center Planica. It contains the heritage of Slovenian Nordic skiing.

Zelenci

Lake Zelenci can be discovered just behind the village of Podkoren on the south side of the main road. The swamp with the Drni marsh is about 1,200 meters long, 150 meters wide on average, about 200 meters in the widest part, and about twenty in the narrowest part. In the extreme western part of the swamp is an emerald green lake, from which extremely clean and cold springs boil through a layer of lake chalk, which gives the water its characteristic blue-green color.

Slovenian Mountain Museum

The Slovenian Mountain Museum in Mojstrana is a unique mountaineering and mountaineering center in Slovenia. A rich collection of objects with a varied historical narrative, a variety of photographic and archival material and an extensive professional library offer you an insight into the multitude and importance of mountaineering in Slovenia. Take a walk around the permanent exhibition with the inspiring concept “The path is a story; the story is the path”. The exhibition trail takes you from the call of the mountains and preparation for the trail through the mountain huts to the conquest of the peaks. There is an information point of the Triglav National Park on the ground floor, you can buy an original souvenir in the museum shop, and your children can enjoy learning workshops in the summer.

Juliana trail

A trail that does not conquer mountain tops but leads you in a respectful distance of the peaks along the edge of the Julian Alps and Triglav National Park. It takes you where you will feel the true pulse of life in the Julian Alps and learn about the rich natural and cultural heritage of this magnificent and astonishing alpine world that abounds in biodiversity. In this sense, the Julian Alps provide a rich cache of unexploited opportunities. Beauty that takes your breath away. A place where you can enjoy views that are meant just for you! A place where we can prove that we have not forgotten nature and we have preserved it for all of you who decide to get away from the rumble of the tourist alpine trails.



SLOVENIA (<http://www.slovenia.info>)



About Slovenia

Slovenia is the only country in Europe that combines the Alps, the Mediterranean, the Pannonian Plain and the Karst. The changing landscape is constantly surprising, time and again. You can have one eye on the sea, then look in the other direction and be surrounded by high mountains. Heading up into the forests, you can see the green plains below you. From upland meadows your view stretches into river gorges. This proximity of opposites and contrasts is a hallmark of the country. In Slovenia you can still walk through virgin forest, or watch the grapes ripen on the oldest vine in the world. You can hear tales of bears, and eat forest fruits that you have foraged yourself on a brief walk out of town. Here you can uncover the secrets of the land, and what lies beneath it. Here you are part of nature.

Slovenia has numerous [sites of special natural interest](#), with features of all four main areas: the Alps, the Mediterranean, the Karst and the Pannonian Plain. It also has a wealth of diverse architecture and urban design.



You can truly feel at home in Slovenia's towns.

Slovenia is a land of **greenery**, which offers great opportunities for [activity holidays](#). Its high-quality [accommodation](#) guarantees a comfortable stay. It is perfect for a summer holiday, a winter break or a weekend away.



Slovenia is famed for its excellent [food](#), accompanied by one of its fine **wines**.

The friendly, hospitable and attentive locals will guarantee you a pleasant stay. You **can** feel Slovenia.



Vršiška 41, 4280 Kranjska Gora, Slovenija
phone.: +386 41 90 30 90
E-mail: info@jasnaresort.com

Basic information

Population: 2,051,000 (Ljubljana 265,000)

Area: 20,273 km²

President of the Republic: Borut Pahor

Membership of international organisations: Slovenia has been a member of the European Union since 1 May 2004 and a member of NATO since 7 April 2004. It is also a member of many other international organisations.



Other major centres: [Maribor](#), [Kranj](#), [Celje](#), [Koper](#), [Novo Mesto](#), [Velenje](#), Murska Sobota.

Official language: Slovene; also Hungarian and Italian in their respective ethnically mixed areas.

Religion: The majority of the population is Roman Catholic; Slovenia also has 40 other officially registered religious communities.

Currency: euro (EUR), since 1 January 2007.

Climate: Alpine, Pannonian, Mediterranean

Time: Central European Time (UTC + 1), Central European Summer Time (UTC + 2)

Average temperatures: July 21°C, January 0°C

Electricity supply: 230 V

Units of measurement: metric – metres, kilometres, grams, kilograms. Temperatures are expressed in degrees Celsius.

Length of borders: with Austria 330 km, with Italy 280 km, with Hungary 102 km and with Croatia 670 km; total 1,382 km

Length of coastline: 46.6 km

Highest peak: Triglav, 2,864 m

Useful info

- **Drinking:** Alcohol is only sold to people over 18, and after 21:00 it cannot be bought in stores.
- **Electricity:** 220 V AC, 50 HZ, European two-pin plugs.
- **Smoking:** No smoking in public places, cigarettes can't be sold to people under 18.
- **Tipping:** It's not traditional to tip in Slovenia, though a reward of about 10 per cent for good service in a restaurant or bar is always appreciated.
- **Visas:** Many foreigners simply need a passport or ID card to enter Slovenia. Those requiring a visa will be able to travel freely between the Schengen-agreement countries for a limited amount of time, usually 90 days.
- **Vinjeta** – a ticket to ride: Slovenia requires all motor vehicles traveling Slovenian highways to be in possession of vinjeta (veen-yeh-tah) stickers. This system now exists instead of paying tolls, and the vinjeta can be easily obtained at nearly all gas stations and kiosks.

Bled

Slovenia has only one island but its uniqueness makes it more attractive than many an archipelago. Sheltered by picturesque mountains, the island reigns in the middle of an Alpine lake.

Its charm has made it a symbol for centuries of a town to which guests from all over the world love to return. This town, which has already existed for a thousand years, is BLED. The town, already famous at the beginning of the 20th century as the most beautiful health spa of the then Austrian empire, attracted the European aristocratic elite. After WWII, one of the most attractive state residences of the former regime was located in Bled. Many of the world's most important people thus enjoyed the beauties of Bled. And now, for decades already, the pilgrims of the new age have been discovering this town.

Cosmopolitan seekers of diversity and beauty, of relaxation and inspiration, tranquility and the challenges of sport will find here a multitude of opportunities. Walking and coaching trails around the lake (There is a 5.5-kilometre walking route around Lake Bled. Also available are a number of walking and cycling routes around Bled and the surrounding areas. All routes are shown on the Bled Tourist Map, available from local tourist agencies and the Tourist Information Centre.), traditional boats, ringing the island's wishing bell, the castle treasures, the nearby ski pistes, mountain trails, golf courses, hunting, fishing, the casino, congress facilities – all these are but fragments of Bled's attraction, which is truly worth experiencing. And those who experience it, long for it again and again.



How to get there:

By Car: Bled is situated in the northwestern part of Slovenia, 47km from the nearest Austrian and Italian borders. It can be accessed year round from the regional road Karavanke Tunnel–Ljubljana, exit Lesce.

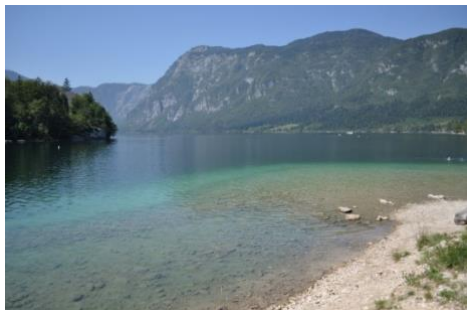
By train: The Lesce–Bled Railway Station, on the Oste railway line (Munich–Salzburg–Villach–Ljubljana–Belgrade–Istanbul–Athens), is only 4km from Bled. The other railway station, Bled–Jezero, is on the railway line Villach–Jesenice–Nova Gorica.

By Bus: There are regular buses running from Bled to local destinations and all major Slovenian centres.

Where to stay:

- ➔ Traveller's Haven
- ➔ Youth hostel Bledec

Bohinj



Bohinj is a valley that stretches from Soteska to Ukanc. On the south side, it is enclosed by the Lower Bohinj Mountains, which rise to 2.000 meters, and on the north by the Triglav mountain range with Mount Triglav, Slovenia's highest mountain (2864 m).

Bohinj is divided into the Upper and Lower Bohinj valley. There are twenty-four villages in these two valleys. Bohinj is one of the most beautiful places in the heart of the Julian Alps and in Triglav National Park.

The natural beauty of high mountains, green forests, and beautiful mountain pastures and meadows, the cultural and historical monuments, and the friendly villages and towns with their hotels, restaurants, inns, and private rooms guarantee visitors a pleasant stay in Bohinj. Bohinj is an ideal starting point for day trips, for walks on the trails that run throughout the valley, and for mountaineering and climbing tours and offers ideal options and opportunities for rest and relaxation in all seasons. In winter the valley becomes a winter sports center, while during the summer the most beautiful pearl of the valley, Lake Bohinj, invites bathers, and with the Sava Bohinjka River, kayakers and fishermen as well.



How to get there:

By Car: Julian Alps are surrounded by highways, so the valley of Bohinj can be accessed very easily from any direction you may choose to come. The road takes through the town of Bled (turn on the main road Ljubljana - Jesenice) first to Bohinjska Bistrica and after 5 km you already reach the Bohinj lake. Some distances: Ljubljana 78 km, Klagenfurt 70 km, Trieste 200 km, Karawankentunnel 50 km.

By train: By train you can come to the village Bohinjska Bistrica from Ljubljana (via Jesenice) or from Nova Gorica. The car train connects the town Most na Soči with Bohinjska Bistrica through the tunnel many times a day.

By Bus: Bohinj is connected by frequent bus lines with the capital Ljubljana; they run almost every hour from early in the morning till the evening. By local buses you can then reach also other villages in Bohinj.

Where to stay:

- ➔ Hostel Pod Voglom
- ➔ Studor 13, Hostel
- ➔ Hostel Murka

Triglav National Park, Soča River, Bovec, Kobarid



Mountains, rivers and lakes, forests, and mountain pastures and meadows are interwoven with a rich cultural heritage. Due to the beauty of the landscape in Bohinj and its precious natural heritage, a good part of the Bohinj regions has been incorporated in the territory of Triglav National Park, Slovenia's only national park.

The park reached its present size in 1981, includes practically all of the Julian Alps that lie in Slovenia, and covers 83,807

hectares. The highest point in the park is the peak of Mount Triglav (2,864 m), from which the park takes its name, and the lowest point is in the Tolminska Chutes (180 m).

To the south is the **Soča Valley** and the gorges of its tributaries. The spots beside the emerald river attract seekers of tranquility as well as those seeking adrenalin challenges. Here, numerous [water sports](#) are available, from kayaking and canoeing to rafting and canyoning.

Visitors can also experience the valley with parachutes, hang-gliders, and mountain bikes. Slovenia's highest ski center on Mount **Kanin** is accessible from the valley where the majority of accommodations and restaurants are to be found in **Bovec**, **Kobarid**, and [Tolmin](#).



Between two gothic churches lies a square with **typical Bovec houses** and friendly **restaurants, shops, and hotels**. Not far from town, by the confluence of the **Soča** and **Koritnica** Rivers, there are a series of arranged **campsites**. In the open field nearby, sports aircraft take off and land.

Kobarid is a small and amiable little town, which is situated at the historic crossroads of important routes running through Posočje (Soča Valley) towards Furlanija (Friuli). Our section on Kobarid includes the Trnovo ob Soči kayak centre along the most striking part of the Soča River (for all admirers of fast rapids and wild waters), as well as the mountain ridges of Kolovrat and Matajur, which border on neighboring Italy.

How to get there:

By car: Bovec–Ljubljana 135km, Bovec–Bled 90km, Bovec–Kranjska gora 45km Bovec–Nova Gorica 75km, Bovec–Udine 65km

By bus: Bus carrier Avrigo operates bus services between Ljubljana and Nova Gorica several times a day. In summer, buses also run to Kranjska gora and Bled.

Postojna Cave



Postojna Cave is a network of 20 kilometres of passages, galleries and chambers into which experienced guides have accompanied more than 31 million visitors in the last 188 years. It is the largest cave in the “classic karst” and the most visited show cave in Europe. In 1872 railway lines were laid in the cave; electricity arrived in 1884. Today you begin your visit aboard the cave train; the electric lighting allows you to admire the size and splendour of the underground world, where the geological past

is recorded in a unique manner. Visitors to the cave are dazzled by a wealth of speleothems: calcite formations, stalactites and stalagmites abounding in a variety of shapes, colours and age. The constant temperature in the caves ranges from 8 to 10° C. A guided visit lasts an hour and a half.

Take the train through the underground world of the largest cave in the Classic Karst and the **most visited tourist cave** in Europe to see magnificent caverns and glistening stalactite formations. View the largest collection of cave animals in one place.



The nearby Pivka and Črna jama caves are also worth a visit.

Timetable of tours:

- | | |
|---------------------------|---------------------------------|
| • From November to March | at 10am, 12am and 3pm |
| • April and October | at 10am, 12am, 2pm, 4pm |
| • May, June and September | on the hour between 9am and 5pm |
| • July, August | on the hour between 9am and 6pm |

How to get there:

By car, Postojna is about one hour west of [Ljubljana](#) on the A1 highway.

By train: There are also direct train and bus connections with [Ljubljana](#).

Where to stay:

- Hotel and Hostel Sport
- Proteus Youth Hostel

**JASNA****Jasna Chalet Resort**
Kranjska Gora, Slovenija, EU**JASNA CHALET RESORT**

Vršiška 41, 4280 Kranjska Gora, Slovenija

phone.: +386 41 90 30 90

E-mail: info@jasnaresort.com

Essential Slovenian phrases

| English | Slovene | How to pronounce |
|------------------------------------|-------------------------------------|-------------------------------------|
| Hello! | <i>Živijo!</i> | Zhee-vee-yo! |
| Good Morning | <i>Dobro jutro</i> | Do-bro yoo-tro! |
| Good Afternoon | <i>Dober dan</i> | do-br dan! |
| Good Evening | <i>Dober večer</i> | do-br ve-cher! |
| Good Night | <i>Lahko noč</i> | Lach-ko noch! |
| Goodbye | <i>Nasvidenje</i> | Nas-vee-denye |
| How are you? | <i>Kako si?</i> | Ka-koh see? |
| I'm fine, thanks! | <i>Dobro, hvala!</i> | Do-bro, hvala! |
| My name is... | <i>Ime mi je...</i> | Ee-meh mee yeh |
| My surname is... | <i>Pišem se...</i> | Pee-shem seh |
| Where are you from? | <i>Od kod si?</i> | Od cod see? |
| Where is...? | <i>Kje je...?</i> | Kye yeh? |
| Sorry | <i>Oprosti</i> | O-pro-stee |
| How much does it cost? | <i>Koliko stane?</i> | Ko lee ko sta ne? |
| A beer /coffee/water/wine, Please. | <i>Pivo/kavo/vodo/vino, prosim.</i> | Peevo/kavo/vodo/veeno, pro-seem. |

Emergency numbers

| | |
|---------------------------------------|------------------|
| Emergency (fire brigade, medical etc) | 112 |
| Police | 113 |
| medical station Kranjska Gora | 588 46 00 |
| Information about phone numbers | 11 88 |
| Taxi | 00386 51 226 117 |
| Jasna Chalet Resort | 00386 41 903 090 |